



---

**SPECIALTIES | CONSTRUCTION | MANAGEMENT**

---

**EDGE S.C.M. BUILDING CONTRACTING L.L.C.**

## **COMPANY PROFILE**

**EXPERIENCE &  
QUALIFICATIONS**

**CONTENT:**

- INTRODUCTION – VISION – MISSION
- VALUES & OBJETIVES
- EDGE MANAGEMENT SYSTEMS– (Q- HSE)
- SCOPE OF SERVICES
- THE TEAM – ORGANIZATION CHARTS -
- ROLES AND RESPONSIBILITIES
- DOCUMENTS AND CERTIFICATES
- THE PROJECTS

## **INTRODUCTION – VISION – MISSION**

**EDGE is a General Contracting Company with “G+4” Classification ; providing integrated Customized Project Management and Construction Services to achieve Clients Objectives.**

With a proven track record and more than 25 years of experience in the Building Construction Industry, EDGE team has successfully completed projects spread into different sectors – Residential Buildings – Luxurious Villas - Hospitality – Commercial buildings – Embassies... EDGE team achievements are characterized by the particular attention to details by **implementing the** most innovative, cost-effective and sustainable methodologies.

**EDGE** highly qualified Engineers and Architects has participated in the successful Inception – Execution - Management and Handing Over of major high end projects in the Middle East; Lebanon – Dubai – Abu Dhabi – Cairo.

**EDGE** services are customized as to meet with the particular and specific Owner's and Project's requirements.

**EDGE** provides Design, Project Management & Consultancy services and Contracting to Project Developers, Consultants and Contractors mainly for Building project construction.

### **OUR VISION**

**“at EDGE we strive on BUILDING TRUST by performing the Services with full Commitment, Integrity and Professionalism”**

### **OUR MISSION**

Implement, maintain and improve the Company Integrated Management System (IMS) – Continuously Plan, Monitor and Check the performance of the Staff and selected Sub-Contractor with the Objective of achieving the highest Quality of executed Activities and Services performed under the Safety and Sustainable applicable Standards and regulations.

## **VALUES & OBJETIVES**

### **Commitment**

EDGE team is committed to perform its obligations and to hand over the Project while targeting the set BUDGET – QUALITY – and TIME for completion and to continuously improve the services provided.

### **Integrity**

Our team performance – Monitoring and Control are characterized by the honesty and ethical behavior - Our Clients Trust and reliability create value to our Business.

### **Professionalism**

We do not bargain on the Quality of our Deliverables - EDGE team will be fully engaged by implementing the Q-HSE Integrated Management System and the highest Standards of practice starting the early stages of the project – Planning – Engineering – Monitoring & Control – through the Execution and until the Final Handing Over –

## **EDGE MANAGEMENT SYSTEMS– (Q- HSE)**

EDGE had set up the *EDGE Management Systems* incorporating the Quality Management System (Q-MS) and the Health Safety Environmental (HSE-MS) Management System with the Objective of achieving the Company's Mission and Projects Targets.

EDGE is committed in executing the MS of the company to ensure that projects are executed in accordance with agreed contract specifications and drawings and within the agreed time frame so as to meet our projects requirements. EDGE staff are liable to working within the set IMS Procedures and General Quality Policy.

The Company is committed to continually improve its quality management systems, through periodic internal audits, necessary Staff and Labors trainings, monitoring and reviewing of measurable quality objectives.

EDGE is committed to achieve the highest practical standards of safety and environmental protection in all spheres of its operations. The company ensures that all staff throughout the organization are trained and well aware of the safety procedure and its implementation. Whilst safety on site is the prime consideration, EDGE believes that successful safety procedures must embrace all of companies' activities including its office, material and operations.

***" HEALTH Safety and Environmental protection definitely improves  
construction in terms of both efficiency and value."***

## **QUALITY POLICY**

EDGE – SCM management hereby undertakes to take all necessary measures to complete the Works to the highest Standard of Quality in compliance with the legal obligations, the project requirements and specifications signed with the Client.

EDGE – SCM shall ensure that the Quality Management System is implemented efficiently and that continuous improvement will be the basic Objective of the Management System.

Adequate resources will be allocated to achieve the maximum efficiency of the system, in order to have the works performed at the specified Quality level within Time and Budget.

The Quality Management system will establish relationships with Clients and Suppliers to develop and facilitate communications for the purpose of improving the Construction process and enhancing the problem prevention. It will also create effective and efficient processes to ensure Client satisfaction and to evaluate the performance of suppliers, subcontractors and their capabilities in supporting EDGE – SCM activities.

EDGE – SCM will establish the measurement criteria in respect of its construction activities as well as the employees performance through Internal Audits. The information obtained will be assessed by the management and will be used to improve the future construction processes.

Our commitment to this Policy and Quality Objectives will be communicated to all Employees, and Management shall regularly review the Objectives, procedures and processes.

**EDGE SCM BUILDING CONTRACTING LLC**

## **HEALTH, SAFETY & ENVIRONMENTAL POLICY**

EDGE-SCM undertakes to implement and maintain the Health and Safety and Environmental Management System (HSE- MS).

The main purpose of EDGE-SCM HSE policy is to minimize the probability and risk of occurrence of any incident or hazard.

EDGE-SCM Management commits itself to take and follow all necessary measures and allocate the required resources in order to ensure that its activities always comply with the HSE legal mandates, rules and regulations in the country or in the location of its operations.

It is essential that every person involved in EDGE-SCM activities, recognized his/her duties and understands the policy objectives and works safely to prevent others from being exposed to necessary risk. Duties, responsibilities and authorities relating to Occupational Health and Safety and Environmental practice of everyone employed in our organization will be communicated to relevant persons, Employees and Sub-contractors. Necessary training, practice and announcements shall be provided to increase employee's awareness.

For the purpose of securing maintenance and improvement of the HSE Management System established as well as the measured taken and to objectively prove that the system is adequately and effectively implemented, the performance shall be measured by internal audits and it shall be reviewed and evaluated by the top management.

This policy and related HSE Management System shall be applicable to all operations and premises controlled and occupied by EDGE-SCM.

**EDGE SCM BUILDING CONTRACTING LLC**

## **SCOPE OF SERVICES**

EDGE services cover the Overall CONSTRUCTION ACTIVITIES including:

### **PLANNING AND FEASIBILITY - DESIGN MANAGEMENT – EXECUTION - PROJECT AND CONTRACT MANAGEMENT – DESIGN & CONSULTANCY SERVICES.**

The services will be customized as to cope with the particular and specific project's requirements. The Project Management System shall be applied during Design, Construction and Handing over phases of the project, ensuring efficient monitoring at the various stages. We will endeavour to address the Owner's Objectives and Set Targets.

#### **EDGE Services cover:**

### **PRE-CONSTRUCTION – TURN-KEY GENERAL CONTRACTING**

#### **PRECONSTRUCTION: PLANNING – DESIGN - ESTIMATION**

The best Opportunity to Save money on a Construction project is during the Pre-Construction Planning Services: Plan Ahead - Monitor and Coordinate the Design phase which basically centres from the initial Concept Design through the Design Development. It also includes the setting out of the procurement strategies, Initial estimation, value engineering, and implementation of Construction Methodology through scheduling.

During planning and preconstruction of a project, cost control begins with a comprehensive and accurate estimate. This includes the Design by the Architects / Engineers and any hidden cost. It enables EDGE Project Management Team to manage costs throughout the construction process by having an accurate assessment of budget and schedule.

#### **TURNKEY SOLUTIONS: DESIGN BUILD - CMAR**

It is the Fast Track Methodology of Work is The Design-Build delivery method allowing the Owner to contract with EDGE in order to complete both the design and construction of the project. EDGE Construction focuses on combining the design, permit and construction of your project to reduce the delivery schedule and hand over your project in



a timely manner. This allows an integrated solution. The qualified design professionals and professional subcontractors will be selected to suit the Client requirements to complete your project successfully.

EDGE dedicated Design team is committed to achieve the Client's intent and aspiration through an efficient and distinguished high end sought after Design. Our Design experience extends mainly into Architectural and Interior Design in coordination with the Building Construction Services.

The Construction Management At Risk (CMAR) is a construction contracting method in which the Construction Management Team becomes a collaborative part of the Project Team. This allows EDGE Construction to assist in evaluating costs, scheduling, and advise about constructability while Design is being developed. This helps the Owner expedite construction by starting elements of construction prior to the design being completed (phasing). In addition to this, the Owner will be provided with a Guaranteed Maximum Price (GMP) for the project which fixes the cost.

## **GENERAL CONTRACTING**

The entire team at EDGE is committed to the implementation of the Project Particular Management System –PPMS- customized in line with the Project's Specifications required for a successful completion of a project. We are diverse in working with many different delivery methods and contract options based on our client's needs. We deliver professionally managed projects through experience, discipline and communication with the Owner. EDGE Construction's team will be with you through preconstruction, estimating, construction, closeout and stand beside you during the warranty period.

The Particular Project Management System – PPMS – set in compliance with the IMS (Integrated Management System) enables the implementation of the most innovative and cost-effective monitoring and value engineering solutions for its clients while upholding its commitment to Project's Targets for QUALITY - BUDGET – TIME and SCOPE -

The Contracting and Execution includes High end projects varying from Luxurious Villas - Residential Buildings and High rise - to Fit-out Interior Design projects for Restaurants and High end Villas – Apartments – Resorts

AREA OF EXPERTISE WITHIN THE **PROJECT MANAGEMENT & CONSTRUCTION PRACTICE:**

## PHASE ONE - PLANNING &amp; FEASIBILITY:

- SETTING OUT THE PROJECT PROGRAM & OBJECTIVES
- FEASIBILITY STUDIES ANALYSIS
- REQUEST FOR PROPOSAL
- BUDGET: ESTABLISHMENT, REVIEW & REPORTING

## PHASE TWO - DESIGN &amp; CONSTRUCTION DOCUMENTATION :

- VALUE ENGINEERING IN COORDINATION WITH COST CONSULTANTS
- DESIGN - REPORTING

## PHASE THREE - PRE-CONSTRUCTION:

- TENDER REVIEW AND CONSTRUCTION CONTRACT AWARD.

## PHASE FOUR - CONSTRUCTION:

- REVIEW STRATEGIC PLAN OF CONSTRUCTION
- SETTING THE PROGRAM OF WORK SETTING OUT & UPDATES
- TEAM BUILDING AND CO-ORDINATION WITH STAKEHOLDERS
- ADMINISTRATION & CONTRACT MANAGEMENT
- HEALTH & SAFETY PLAN IMPLEMENTATION & MONITORING.
- QUALITY CONTROL & PROCEDURE IMPLEMENTATION
- PROCUREMENT PLAN & COMMERCIAL ISSUES FOLLOW-UP
- REPORTING ON PROGRESS AND VARIANCES TO PLANNED
- VARIATIONS PROCESS MANAGEMENT
- EXTENSION OF TIME & COST CLAIMS ADMINISTRATION & RESOLUTION
- BUDGET - PAYMENT REVIEW AND PROCESSING

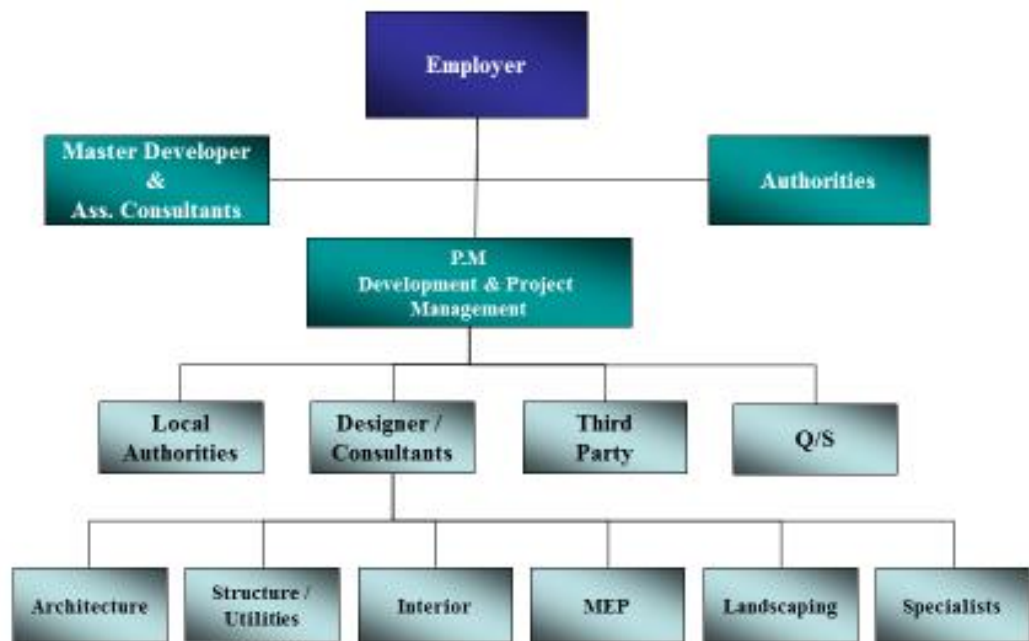
## PHASE FIVE - PROJECT CLOSING OUT:

- PROJECT OBJECTIVES COMPLIANCE REVIEW
- CLIENT STAFF TRAINING
- HANDING OVER

## THE TEAM – PROJECT ORGANIZATION CHART

EDGE SPECIALTIES - CONSTRUCTION - MANAGEMENT

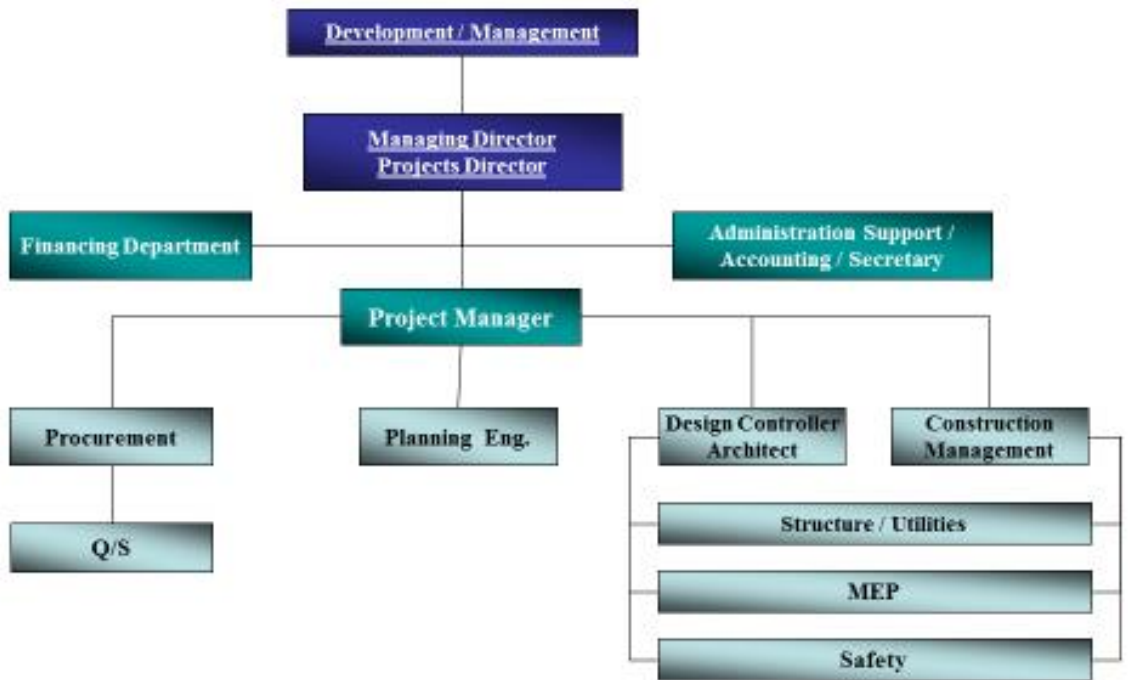
Project Organization Chart



## THE TEAM – COMPANY ORGANIZATION CHART

EDGE SPECIALTIES - CONSTRUCTION - MANAGEMENT

Company Organization Chart



## RESOURCES

### KEY STAFF

ELIE HENRY YARED	30 YOЕ	<b>MANAGING DIRECTOR</b>
NADIM YARED	25 YOЕ	<b>ARCHITECT - PM</b>
HOUSSAM CHARARA	25 YOЕ	<b>MEP COORDINATOR</b>
RAZA MUSHFAQ	11 YOЕ	<b>PROJECT ENGINEER</b>
NAGARAJU GARUVANDA	9 YOЕ	<b>PROJECT ENGINEER</b>
ZAKHER KHAN	16 YOЕ	<b>SENIOR SAFETY OFFICER</b>
MURUGAPERUMAL KANDASAMY	7 YOЕ	<b>SITE ENGINEER</b>
KHALED EID	35 YOЕ	<b>G Foreman</b>
JULIETO SALESALÉ	11 YOЕ	<b>PROCUREMENT MANAGER</b>
SREEJU ALATHY	7 YEO	<b>DRAFTSMAN</b>

### LABOURS

GANG LEADERS	7 No	<b>Major Projects</b>
CARPENTERS	35 No	<b>Specialized in Heavy Formwork</b>
STEEL FIXERS	25 No	<b>Specialized in Detailed Steel Work</b>
MASONS	7 No	<b>Finishing Works</b>
DRIVERS	4 No	<b>Various License Grade</b>

## EQUIPMENT

FORMWORK	1000 SQM	<b>GFT - DOKA</b>
SCAFFOLDING	1200 SQM	
CONCRETE MIXERS	2 No	
VIBRATORS	12 No	
BENDING & CUTTING MACHINE	2 No	
GENERATORS	3 No	
MINI- VAN ; PICK UP	4 No	

## **ROLES AND RESPONSIBILITIES**

### Project Manager

The Project Manger shall report to the Managing Director in EDGE – SCM Main Office. He is fully authorized to decide for all aspects of site activities of the project including fabrication and expedition of all material in coordination with Managing Director. His responsibilities are to;

- Represent EDGE.
- Ensure compliance on site with all Project policies, specifically with regard to quality assurance as well as health, safety and environmental issues.
- Arrange to fulfil all contractual requirements.
- Approve and implement the Project Quality Control Plan.
- Make ready cost control structure and monitor actual values.
- Make work schedule and requirements planning, engage related sources in a timely manner and monitor the progress.
- Prepare periodical project progress reports.
- Submit all forms, letters, reports, progress payments and all contractual documents to CLIENT/ENGINEER Representative.
- Coordinate the design and construction activities.
- Arrange and lead the periodical site meetings.
- Lead the periodical quality meetings.
- Lead the periodical Health Safety and Environmental meetings.

### Construction Manager

- Representing EDGE – SCM during the absence of Project Manager.
- Leading the construction group
- Ensures required coordination with other disciplines
- General responsibility for health, safety and environment and quality issues
- Chair the meetings in the absence of project manager
- Monitor the planned and actual progress on site
- Ensure the smooth flow of the procurement activities

### QA/QC Engineer

The QA/QC Manager monitors the overall implementation and effectiveness of the Quality Assurance and Quality Control Activities throughout the Project operations. He shall report to the Project Manager and Management Systems Directorate at EDGE – SCM Main Office.

The responsibilities of the QA/QC Manager/ QA/QC Engineer are to:

- Ensure that a sound Quality System is defined, implemented and maintained in compliance with the project quality objectives and policies defined by the project management.
- Ensure compliance with the quality objectives and policies of the operations defined under the formally approved and authorized site-related quality system documentation, as well as conducting the relevant site audits.
- Submit quality reports that contain data about the operation of the quality system at the site as well as the findings related thereto to the Project Management and Management Systems Directorate at regular intervals.
- Provide guidance and assistance in resolving quality related problems.
- Maintain a system of quality records that provides sufficient data for analysis of quality conditions and trends to form a basis for management action.
- Develop quality assurance, quality control and measurement techniques in cooperation with other departments at site and ensure implementation of those.
- Consult on quality issues to all site departments.
- Provide support to all other departments for handling and evaluating Client/Engineer complaints, taking corrective actions and reporting those to the Management.
- Approve the Project Quality Control Plan, procedures, site instructions, forms and revisions therein as to their compliance with the Quality System.
- Eliminating the factors that hinder smooth operation of the quality system, and report the necessary corrective and preventative actions to the Project's Management. Also, submitting periodical reports to the Management Systems Directorate on the corrective and preventive actions implemented.

#### Health, Safety Engineer

The Health, Safety and Environmental Engineer monitors the overall implementation and effectiveness of the Occupational Health and Safety Management System and Environmental Management System Activities throughout the project operations. He reports to the Project Manager and Management Systems Directorate at EDGE – SCM Head Office. His responsibilities are to;

- Prepare and implement a site Health, Safety and Environmental Plan for the Project.
- Ensure compliance with the Health, Safety and Environmental objectives and policies of the operations defined under the formally approved and authorized site-related system documentation, as well as conducting the relevant site audits.
- Approve the Project Health, Safety and Environmental Plan, procedures, site instructions, forms and revisions therein as to their compliance with the Occupational Health and Safety Management System and Environmental Management System.
- Prepare safety instructions for each issue in line with the Health, Safety and Environmental Plan and local safety regulations.



- Ensure implementation of the related safety regulations and instructions.
- Organize and report on regular Health, Safety and Environmental meetings.
- Consult on Health, Safety and Environmental issues to all site departments.
- Report on accidents and safety related matters.
- Prepare statistical reports on accidents and occupational illness.
- Eliminating the factors that hinder smooth operation of the Occupational Health and Safety Management System and Environmental Management System, and report the necessary corrective and preventative actions to the project's management. Also, submitting periodical reports to the Management Systems Directorate on the corrective and preventive actions implemented.

#### Contract Manager /Commercial manager

The Contracts Engineer shall report to the Project Manager. Her / His responsibilities are to:

- Ensure the preparation of progress payment reports in a timely and accurate manner.
- Prepare nominated Sub-contractors' Agreements and progress payment certificates.
- Report potential bottlenecks to the Project Manager.
- Implement the Contractual issues raised by the Quantity Surveyor.
- Ensure a sound planning for all construction activities, and monitor the progress
- Ensure efficient operation of documentation and correspondance tracing system
- Ensure compliance of structural and architectural construction materials with approved design documentations, specifications and norms.
- Prepare the Sub-contract agreements (except Nominated Sub-contractors) and progress payment certificates

#### Technical Engineer

The Technical Engineer shall report to the Project Manager and works in coordination with the Project manager. His responsibilities are to

- Establish and implement site procedures for document and drawing control.
- Receive and duly register all the design documentation and transmit accordingly.
- Arrange the technical documentation for submittals of both material selection and design and perform all the related follow-up.
- Issue only approved and updated documents and drawings to site departments.
- Ensure that the design and design related activities are in accordance with CONTRACT documents and Project Quality Control Plan.
- Coordinate all the design activities and ensure proper design superposition of various disciplines.
- Maintain construction materials specifications and norms to be complied with while performing the work.

- Prepare periodical design progress reports.
- Arrange for the design and execution of all shop drawings to be realized on site.
- Maintain quality records throughout the project and keep them available for evaluation by the Engineer and/or Audit teams.

#### Procurement and Logistics Engineer

The Procurement and Logistics Engineer shall report to the Project Manager. The responsibilities are to:

- Make market surveys for all purchase items required for the project.
- Manage the purchasing activities for local materials and equipment.
- Plan and organize import activities for non-local materials and equipment.
- Plan and establish a sound system for material handling and storage activities.
- Ensure efficient operation of warehouse and inventory tracing system.
- Maintain quality records throughout the project and keep them available for evaluation by the Engineer and/or Audit teams.

#### Administration & Finance Manager

He reports to Project Manager, His responsibilities are to;

- Ensure adequate living conditions for all personnel at site.
- Arrange transportation and accommodation for personnel.
- Arrange the pre-determined site training programs.
- Prepare periodical personnel and fiscal reports.
- Cooperate with Project Manager to fulfill all requirements related with personnel and accounting in accordance with project policies and local regulations.
- Control the cash expenses.
- Ensure that personnel actual working hours are recorded properly.
- Ensure that periodic personnel payrolls are prepared timely and accurately.

#### Planning Engineer

The Planning Engineer shall report to the Project Manager. Her / His responsibilities are to:

- Prepare required planning and reporting activities to the Employer's Representative
- Monitor progress on site and progress payments
- Preparation of all disciplinary work schedules
- Preparation of internal planning reports and reports them to EDGE – SCM main Office as well.

### Quantity Surveyor

The Quantity Surveyor shall report to the Contract Manager. Her / His responsibilities are to:

- Establish and implement site procedures for costing.
- Carry out financial planning for contract, including cash flow, budgeting etc.
- Check drawings and other contract documents for any variation from contract.
- Establish records system for variations, additional works, day works etc. and ensure proper operation by site staff.
- Ensure contractual submissions are made in order to meet the work schedule objectives.

### Document Controller

The document Controller shall reports to the Contract Manager and works in coordination other departments. His responsibilities are to

- Assists Technical Office Manager for preparation of subcontract agreements and correspondence as well
- Prepare required submittals and correspondence with Employer's Representative
- Ensure traceable incoming and outgoing documentation and correspondence

### The Site Engineer (Structure works)

He reports to the Site Manager. His responsibilities are to;

- Perform mobilization and de-mobilization activities.
- Perform all civil and structural works in compliance with design documentation, specifications and norms.
- Prepare process work instructions in cooperation with the QA/QC Department.
- Prepare test and inspection work instructions and forms in cooperation with the QA/QC Department.
- Arrange for timely supply of materials and equipment in conjunction with the logistics department and perform receiving inspections so as to ensure conformance to requirements.
- Prepare reports related to his department's activities.
- Maintain quality records throughout the project and keep them available for evaluation by the Engineer and/or Audit teams.

### The Site Engineer (Finishing Works)

He reports to the Site Manager. His responsibilities are to;

- Establish and implement site procedures for document and drawing control.
- Receive and duly register all the design documentation and transmit accordingly.
- Arrange the technical documentation for submittals of both material selection and design and perform all the related follow-up.
- Issue only approved and updated documents and drawings to site departments.
- Ensure that the design and design related activities are in accordance with CONTRACT documents and Project Quality Control Plan.
- Coordinate all the design activities and ensure proper design superposition of various disciplines.
- Maintain construction materials specifications and norms to be complied with while performing the work.
- Prepare periodical design progress reports.
- Arrange for the design and execution of all shop drawings to be realized on site.
- Maintain quality records throughout the project and keep them available for evaluation by the Engineer and/or Audit teams.

### The MEP Engineer

He reports to the Project Manager and works in coordination with the Project Manager

His responsibilities are to;

- Manage all on and off site Mechanical Electrical and Plumbing works in accordance with the project requirements.
- Examine applicability of the basic design in accordance with the project requirements.
- Coordinate Mechanical Electrical and Plumbing Works activities with other disciplines.
- Maintain quality records throughout the project and keep them available for evaluation by the Engineer and/or Audit teams.
- Ensure a sound planning for all mechanical and electrical works, and monitor the progress.
- Prepare progress reports related to mechanical and electrical works.
- Arrange for timely supply of materials and equipment in conjunction with the logistics department and perform receiving inspections so as to ensure conformance to requirements.
- Report potential bottlenecks to the Project Manager

## DOCUMENTS AND CERTIFICATES

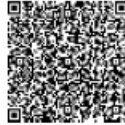


شهادة تسجيل لضريبة القيمة المضافة في الامارات العربية المتحدة  
Certificate of Registration for Value Added Tax in the United Arab Emirates

The Federal Tax Authority certifies that the entity below is a registered person for Value Added Tax in the UAE	تشهد الهيئة الاتحادية للضرائب أن الجهة التالية مسجلة لضريبة القيمة المضافة في الامارات العربية المتحدة
Full Arabic legal name	إيدج إس سي إم ليفتافلات البناء ش.م.خ.م
Full English legal name	EDGE S C M BUILDING CONTRACTING L.L.C
Registered address	Office 302 - Al MAKTAB Bldg., Al Barsha 1 - Al Barsha 1, Dubai, United Arab Emirates, 888998, +97145487282
Tax Registration Number	100376781900003
Effective Registration Date	01/01/2018
First VAT Return Period	01 Jan 2018 - 31 Mar 2018 and quarterly thereafter
VAT Return due date	29 Apr 2018
Start and end dates of Tax periods:	1 Apr to 30 Jun, 1 Jul to 30 Sep, 1 Oct to 31 Dec, 1 Jan to 31 Mar

يرجى التأكد من صحة تفاصيل الشهادة، يجب إبلاغ الهيئة الاتحادية للضرائب في حال تغيير الاسم التي حصلت فيها على رقم التسجيل الضريبي الخاص بك.

Please check that the details on this certificate are correct. You must inform the Federal Tax Authority of any change on the basis of which you obtained your Tax Registration Number.



Issuing Date:

24/03/2021

تاريخ الإصدار



## رخصة تجارية Commercial License

تفاصيل الرخصة / sliated esneciL

License No.	740676	رقم الرخصة
Company Name	EDGE S C M BUILDING CONTRACTING L.L.C	اسم الشركة
Trade Name	EDGE S C M BUILDING CONTRACTING L.L.C	الاسم التجاري
Legal Type	Limited Liability Company(LLC)	الشكل القانوني
Expiry Date	18/08/2024 تاريخ الانتهاء 0العالمي	تاريخ الصلاحية
D&B D-U-N-S ® No.	رقم التسجيل التجاري	رقم الرخصة الم
Register No.	4066811	عضوية الغرفة

/ srebmeM esneciL الطرف	/ eman الاسم / رقم الشخص
----------------------------	-----------------------------

640209 / eloS الحصص	ايلى هنرى يارد / ytilanoitaN الجنسية	nonabel / لبنان ELIE HENARI YARED	reganaM / مدير
------------------------	---	--------------------------------------	----------------

Building Contracting	نشاط الرخصة التجارية / License Activities
	مقاولت البناء

	العنوان / sserddA
--	-------------------

Phone No	971-4-5487282	تليفون	P.O. Box	صندوق بريد	88989
Fax No	971-4-5487282	فاكس	Parcel ID	رقم القطعة	373-1343

Mobile No	971-50-3944294	هاتف متحرك	البريد الإلكتروني / liamE	info@edge-scm.com
-----------	----------------	------------	---------------------------	-------------------

	ملك انور محمد عبدالخالق قرقاش - البرشاء الولي 203 مكتب رقم
--	--

	الملحظات / skrameR
--	--------------------

مقاولت البناء ارضي واربع طوابق - / إصدار تراخيص المشاريع مرتبط بالشتراطات الواردة في شهادة سجل المزاولة الفنية الصادرة من البلدية - وللطع على السجل من خلال الرابط :

## THE PROJECTS

**EDGE team had been directly involved with the Different Stake Holders and Clients in the Design and / or the Execution of the below listed projects including but not limited to:**

- ESTIMATION
- CONTRACTS NEGOTIATION AND CONCLUSION
- SETTING THE STRATEGIES OF WORK
- SETTING THE PLANNING / PROGRAM OF WORK
- PROCUREMENT PROCESS
- PROJECT EXECUTION AND MONITORING
- CONTRACT MANAGEMENT
- DESIGN AND SELECTION OF MATERIAL
- FINANCIAL REPORTING AND COST CONTROL
- SAFTEY MANAGEMENT
- QUALITY MANAGEMENT
- TESTING & COMMISSIONING
- HANDING OVER
- CLOSING OUT

## LIST OF CURRENT AND COMPLETED PROJECTS

PROJECT DESCRIPTION	LOCATION	TYPE OF WORKS	CLIENT	CONSULTANT	CONTRACT VALUE
2020 - 2023					
G +1 + R - VILLA -	Palm Jumeirah	Modification	FAZAL & MAJID	Pioneer	5M AED
HG VILLA -	Al Khawaneej	Construction	H – G	LOCI	30M AED
B+G+1 - VILLA -	Nadd Al Sheba	Construction	H & H – MAZROOEI	ERGA Progress	13M AED
B+G+1 - VILLA -	Al Barsha 1	Construction	H & H – SELLWOOD	ERGA Progress	12M AED
MERVILLE VILLA -	Emirates Hills	Modification	Mr. & Mrs MERVILLE	ALPHA	2M AED
G+1 Private Villa	Palm Jumeirah	Construction	Mrs. MAJID	Orient Crown	12M AED
B+G+1 Private Villa	Palm Jumeirah	Modification	Mr CHABEER	Orient Crown	0.5M AED
B+G+1 Private Villa	Dubai Hills	Construction	Dr. WADEYA	AL AJMI	6.5M AED
G+1 Private Villa	Arabian Ranches	Modification	ALPHA Decoration -	PENCIL	0.5 M AED
G+1+ Private Villa	Jumeirah Park	Construction	Dr. IMRAN	WWF Architects	10.2M AED
G+1+ R Private Villa	Al Quoz 2- Dubai	Construction	Mrs. S AL MARZOOQI	AJMI Architects	3.5M AED
2013 - 2020					
3 Star Ecos Hotel	Al Furjan 11, Dubai	Construction	Faisal Holdings Hotels Co. LLC	Naga Architects	64.84M AED
2B+G+14 Typ. Flr.+HC+R Bldg.	Al Thanya First, Dubai	Construction	M/s. S.A. Properties Limited	Abdul Rahim	70M AED
2B+G+14+R Comm./Res. Bldg.	Al Jadaf, Dubai	Construction	M/s. Emerald Properties LLC	Al Ajmi	67.75M AED
3B+G+12 Residential Bldg.	Dubailand Residence, Dubai	Design & Build	Mr. Abdul Ghaffar Al Hashimi	City Space	85M AED
3B+G+M+8+R Com. & Res. Bldg.	Al Garhoud, Dubai	Construction	M/s Al Tayer Real Estate	ART Consultants	122.5M AED
B+G+1 (3 Villas)	Jumeirah First, Dubai	Construction	Mrs. Aminah Al Tayer	ART Consultants	13.3M AED
B+G+1 +R (3 Nos.) Private Villa	Nad Al Sheba Fourth, Dubai	Construction	Mr. Abdulla Habib Al Mulla	Erga Progress	49.17M AED
G+3 Labour Camp Accomodation	Al Muhaisnah, Dubai	Design & Build	NTDE	Orient Crown	18.75M AED
2B+G+11+HC Comm./Res. Bldg.	Dubai Silicon Oasis, Dubai	Construction	M/s Al Hathboor Group	Al Hashemi	94.25M AED
B+G+1 Villa	Nad Al Sheba Fourth, Dubai	Construction	Mr. Mohammed Abdulmagied Seddiqi	LOCI	14.1M AED
Gr. Private Villa	Al Kawaneej, Dubai	Construction	Mrs. Monna Al Marri	EO	20.15M AED
Private Villas	Egypt	Interior Fitout	E.P. Development	Y&Y Interior Design	2.7M USD
B+G+1 Investment Villa	Jumeirah Third, Dubai	Construction	Mr. Hassan Daher	DXB Lab	22M AED
G+M Car Showroom	Al Khabaisi, Dubai	Construction	M/S Al Ghandi	WWF	15.4M AED
3B+G+23+R Residential Bldg.	Al Mankhool, Dubai	Construction	Mawarid Finance	DXB Lab	110M AED



B+G+8+G Res. Bldg.	Nad Hessa, DSO, Dubai	Construction	Ms. Saima Sohail Tabba	Emsquare Engineering	43.6M AED
G+1 4 Nos. Townhouses	Jumeirah First, Dubai	Construction	Ms. Hurreya Abdulla	Erga	10M AED
B+G+1 Private Villa	Jumeirah, Dubai	Construction	Mr. Ryan Mahoney	LWD Design Group	9M AED
Rixos Hotel -	Al Alameen - Egypt	Interior Fitout	Rixos	Y&Y Interior Design	12M USD
2008-2013					
Centro Hotel &Office Bldg.	Abu Dhabi - ADNEC	Construction	ROTANA	GA Arcitects	240M AED
Multi-Storey Car Park	Abu Dhabi - UAE	Construction	DOT	Parsons	120M AED
Qatar Embassy	Abu Dhabi - UAE	Refurbishment	MOF - Qatar	AEB - Qatar	30 M AED
Plaza Views - 5B+G+18+R	Corniche -Abu Dhabi - UAE	Construction	TMKN	Maydan	280 M AED
2006-2008					
Tecom : 2B+G+24+R	Tecom - Dubai - UAE	Construction	AL DYAAR	KLING Consult	120M AED
Metropolis - 3B+G+22+R	Busines Bay - Dubai - UAR	Construction	AL DYAAR	LA CASA	180M AED
Four Seasons Hotel	Jumeirah	Schematic Design	H&H	WATG	800M AED
CP08 - 4B+G+50+R	DIFC	Construction	Dubai Properties	Hopkins Architects	900MAED
1992-2006					
Sheraton Hotel - 5 Stars	Aleppo - Syria	Construction	Private	Khatib & Alami	28M USD
French Embassy	Beirut - Lebanon	Construction	MOFA - France	Yves Lyon - France	5M USD
Byblos Tower - 6B+G+22+R	Beirut - Lebanon	Construction	Byblos Bank	SKP - Consultants	22M USD
St. Nicholas Private Residence	Beirut - Lebanon	Design & Build	Mezher	Y&Y Design	3MUSD
Private Residence	Baadbat - Lebanon	Design & Build	Massoud	Y&Y Design	2M USD
Private villa	Lebanon	Design & Build	Abu Jawdeh	Y&Y Design	1M USD

**G ONLY - PRIVATE VILLA – AL KHAWANEEJ - DUBAI – UAE**  
HIGH END RESIDENTIAL VILLA



**B + G + 1 - PRIVATE VILLA – NADD AL SHEBA - DUBAI – UAE**  
HIGH END RESIDENTIAL VILLA

**B + G + 1 - PRIVATE VILLA – AL BARSHA 1 - DUBAI – UAE**  
HIGH END RESIDENTIAL VILLA

**G +1 + R - PRIVATE VILLA – PALM JUMEIRAH - DUBAI – UAE**  
HIGH END RESIDENTIAL VILLA



**B+G +1 PRIVATE VILLA – DUBAI HILLS - DUBAI – UAE**  
HIGH END RESIDENTIAL VILLA

**G +1 PRIVATE VILLA – JUMEIRAH PARK - DUBAI – UAE**  
HIGH END RESIDENTIAL VILLA



**G +1 + R PRIVATE VILLA - DUBAI - UAE**  
HIGH END RESIDENTIAL VILLA

EDGE TEAM SCOPE:           GENERAL CONTRACTING





**G +1 + R PRIVATE VILLA - ARABIAN RANCHES - DUBAI – UAE**  
HIGH END RESIDENTIAL VILLA

EDGE TEAM SCOPE:           GENERAL CONTRACTING – VILLA EXTENSION



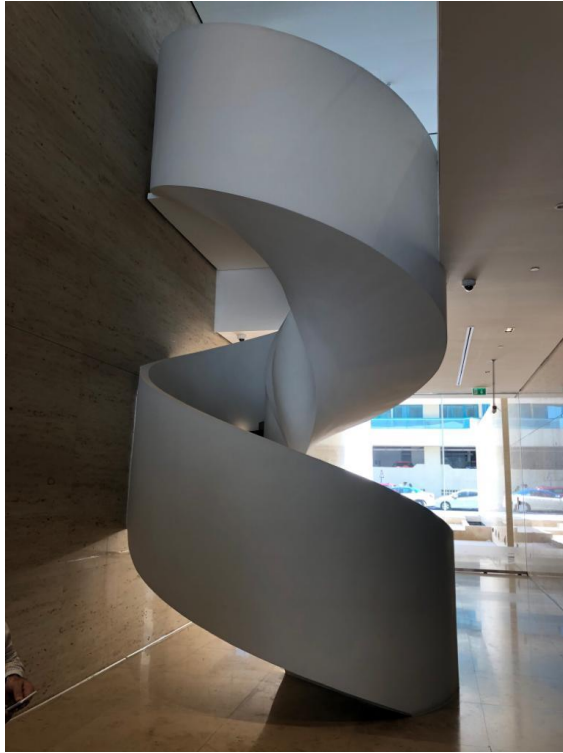
**M RESIDENCE – AL MANKHOUL - DUBAI – UAE**  
HIGH END RESIDENTIAL TOWER

EDGE TEAM SCOPE:           GENERAL MANAGEMENT OF CONTRACTOR



**M RESIDENCE – AL MANKHOUL - DUBAI – UAE**  
HIGH END RESIDENTIAL TOWER

EDGE TEAM SCOPE:           GENERAL MANAGEMENT OF CONTRACTOR



**AL MANAZEL - AL GARHOOD - DUBAI - UAE**  
HIGH END RESIDENTIAL BUILDING

EDGE TEAM SCOPE: GENERAL MANAGEMENT OF CONTRACTOR



**AL HATHBOOR BLDG. – D.S.O. - DUBAI – UAE**  
RESIDENTIAL BUILDING

EDGE TEAM SCOPE: GENERAL MANAGEMENT OF CONTRACTOR.

**AL HASHEMI BLDG. – DUBAILAND - DUBAI – UAE - RESIDENTIAL BUILDING**

EDGE TEAM SCOPE: GENERAL MANAGEMENT OF CONTRACTOR



**DUBAI SELECTED VILLAS – DUBAI - UAE**

EDGE TEAM SCOPE: GENERAL MANAGEMENT AND CONTRACTING

DESIGNER: LOCI – Dubai – UAE

**DUBAI SELECTED VILLAS – DUBAI - UAE**

EDGE TEAM SCOPE: GENERAL MANAGEMENT AND CONTRACTING

DESIGNER: ERGA – Dubai – UAE



**DUBAI SELECTED VILLAS – DUBAI - UAE**

TEAM SCOPE: GENERAL MANAGEMENT AND CONTRACTING

DESIGNER: DXBLAB – Dubai – UAE

**HIGH END SELECTED PRIVATE DEVELOPMENT – JUMEIRAH 1**

**HIGH END SELECTED PRIVATE HOUSE – JUMEIRAH 1**

TEAM SCOPE: GENERAL MANAGEMENT AND CONTRACTING

DESIGNER: L. W. DESIGN – Dubai – UAE





**CARA COMMERCIAL CENTRE - DUBAI - UAE**

TEAM SCOPE: DESIGN MANAGEMENT – PROJECT MANAGEMENT.

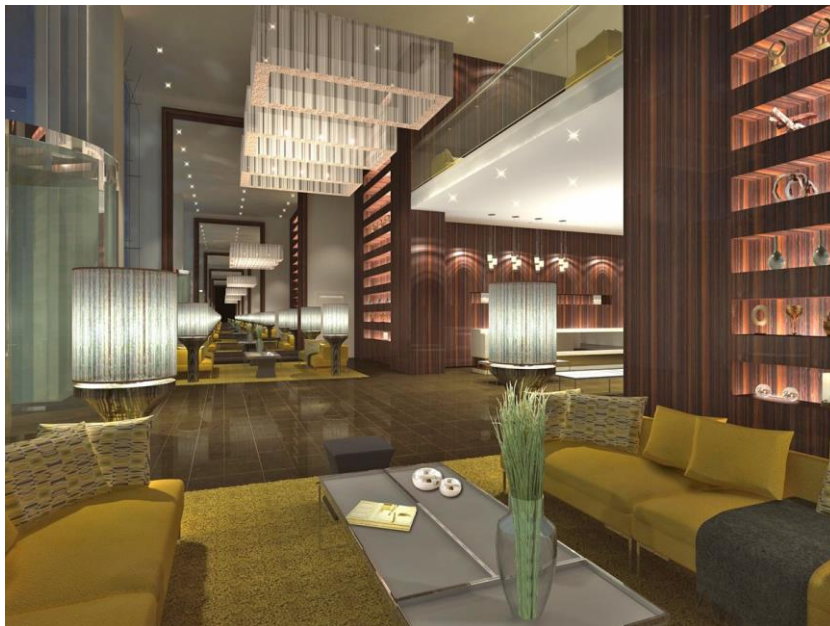


**CENTRO HOTEL – ROTANA - ABU DHABI – UAE**  
HOTEL 414 ROOMS & ANNEX OFFICE BUILDING

EDGE TEAM SCOPE: GENERAL MANAGEMENT OF CONTRACTOR.

EMPLOYER: C.H.I. - Abu Dhabi – UAE  
DESIGN: G.A.A.E. - Abu Dhabi – UAE

53,000 SQM



**PLAZA VIEWS - ABU DHABI – UAE**

MIXED USED DEVELOPMENT – NEGOTIATION TILL CONTRACT AWARD EDGE TEAM

EDGE TEAM SCOPE: SCOPE: GENERAL MANAGEMENT OF CONTRACTOR.

EMPLOYER: TMKN -  
DESIGN: MAYDAN - Abu Dhabi – UAE

**CARPARK - ABU DHABI – UAE  
UNDERGROUND PARKING & TEMPORARY PARKING STRUCTURE**

EDGE TEAM SCOPE: GENERAL MANAGEMENT OF CONTRACTOR.

EMPLOYER: DOT - Abu Dhabi – UAE  
DESIGN: PARSONS - Abu Dhabi – UAE



**QATAR EMBASSY - ABU DHABI – UAE**  
REFURBISHMENT OF THE QATAR EMBASSY

EDGE TEAM SCOPE: GENERAL MANAGEMENT OF CONTRACTOR

DESIGN: AEB – Qatar



**D.I.F.C. – CP08 - DUBAI - UAE**

EDGE TEAM SCOPE: CONSULTANCY SERVICES – PROJECT MANAGEMENT –  
CONTRACT ADMINISTRATION

EMPLOYER: DUBAI PROPERTIES - Dubai  
DESIGN: HOPKINS ARCHITECTS – UK  
CONTRACTOR: ALEC

360,000sqm – 1.3B AED



**JUMEIRAH GARDEN CITY - DUBAI -UAE .**

EDGE TEAM SCOPE: DESIGN MANAGEMENT & COORDINATION – SCHEMATIC AND PRELIMINARY DESIGN

DESIGNER: WATG - USA



**MADISON RESIDENTIAL TOWER – DUBAI –UAE**

EDGE TEAM SCOPE: GENERAL CONTRACTING – PROJECT MANAGEMENT  
DESIGNER: KLING Consult – Dubai

30,000sqm – 120M AED

**METROPOLIS COMMERCIAL TOWER – DUBAI –UAE**

EDGE TEAM SCOPE; GENERAL CONTRACTING – PROJECT MANAGEMENT  
DESIGNER: LA CASA – Dubai  
CONTRACTOR: EMIRATE MAN





**SHERATON HOTEL FIVE STARS**

EDGE TEAM SCOPE: MAIN CONTRACTING – PROJECT MANAGEMENT –

DESIGNER: KHATIB &amp; ALAMI

30,000sqm – 25M USD

**FRENCH EMBASSY – BEIRUT - LEBANON**

EDGE TEAM SCOPE: MAIN CONTRACTING – PROJECT MANAGEMENT

CONTRACTOR: LA CONSTRUCTA

DESIGNER: YVES LYON – France



**BYBLOS BANK HEAD-QUARTERS – BEIRUT - LEBANON**

EDGE TEAM SCOPE: MAIN CONTRACTING – PROJECT MANAGEMENT

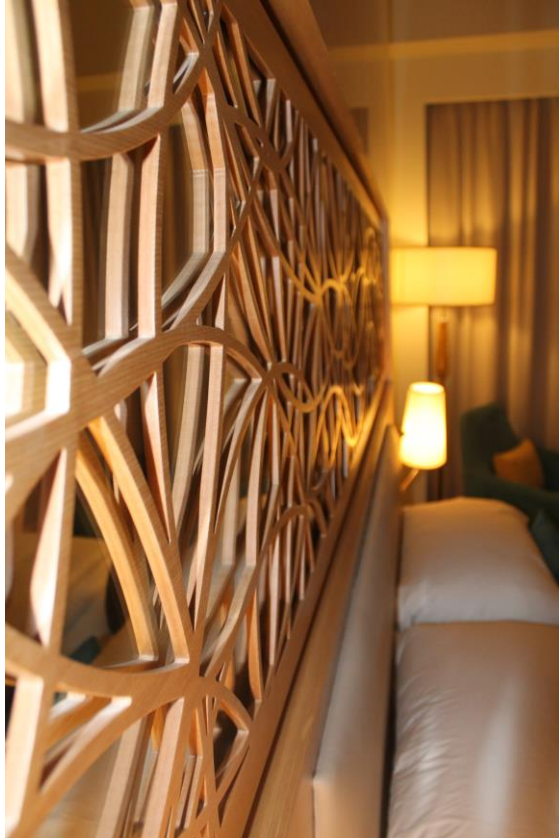
DESIGNER: SKP – Lebanon

20,000sqm – 20M USD



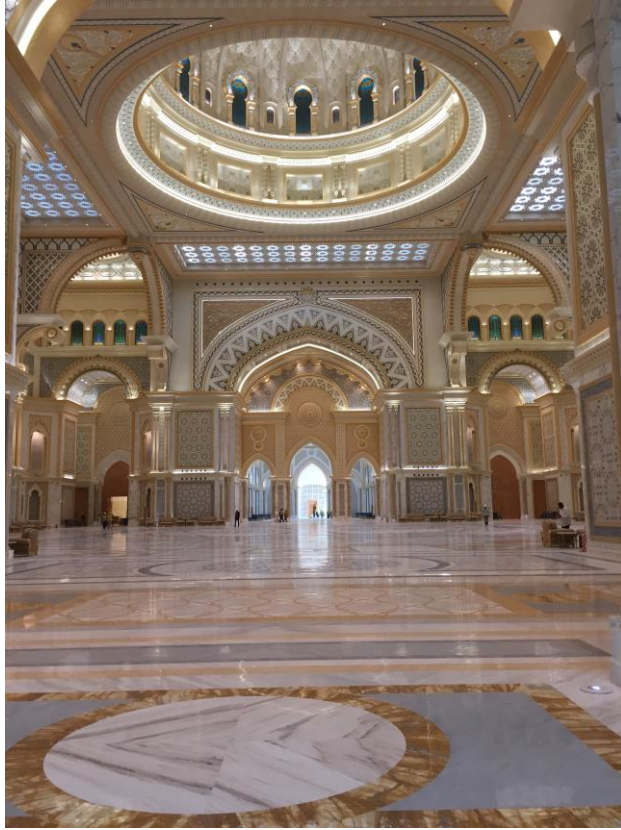
**FIT OUT & INTERIOR DESIGN**  
**MARIOTT HOTEL – Jaddaf – Dubai UAE**

EDGE TEAM SCOPE: FINISHING &amp; FIT-OUT WORKS



**VIP PROJECT – ABU DHABI –**

EDGE TEAM SCOPE: INTERIOR DESIGN COORDINATION



**SHARM EL SHEIKH – RIXOS HOTEL – TURQUOISE RESTAURANT**

EDGE TEAM SCOPE: INTERIOR DESIGN AND EXECUTION



**ECOS HOTEL – AL FURJAN – DUBAI - UAE**

EDGE TEAM SCOPE: MAIN CONTRACTING – PROJECT MANAGEMENT

DESIGN: NAGA ARCHITECTS



**TECOM – RESIDENTIAL BLDG. DUBAI - UAE**

EDGE TEAM SCOPE: MAIN CONTRACTING – PROJECT MANAGEMENT

DESIGN: ARACO ARCHITECTS

